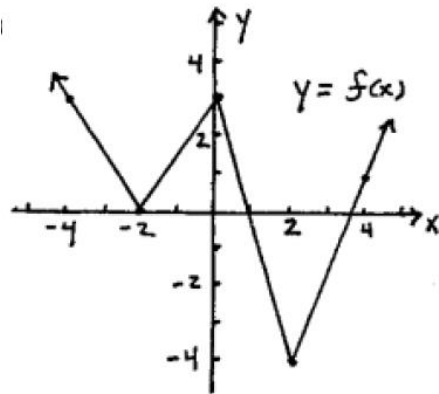


## Classwork Interpreting Graphs

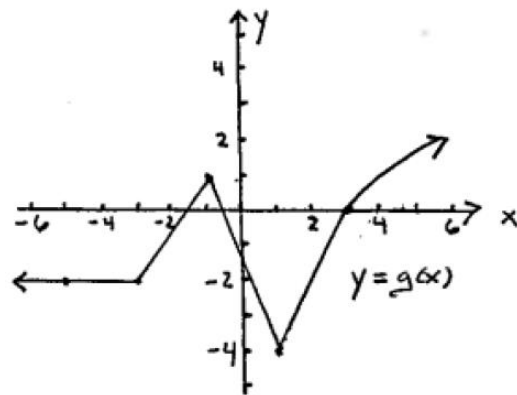
Please work all problems on a separate sheet of paper.

In problems 1 – 6 use the graphs of the functions  $f$  and  $g$  (given below) to find the indicated function values

### Graph of $f$

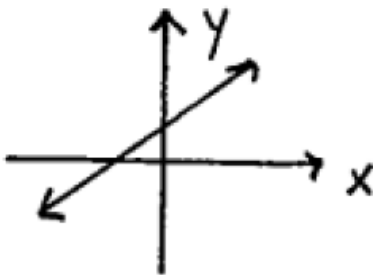


### Graph of $g$

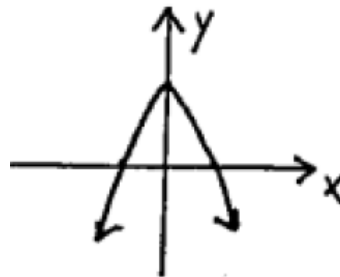


1.  $f(-4)$
2.  $f(-2)$
3.  $f(0)$
4.  $f(2)$
5.  $f(4)$
6.  $g(-5)$

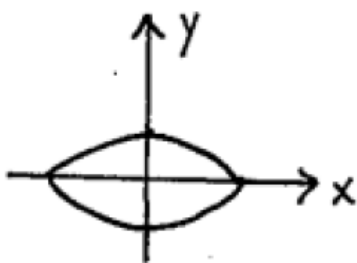
In problems 7 – 12 use the vertical line test to determine which of the following are graphs of functions.



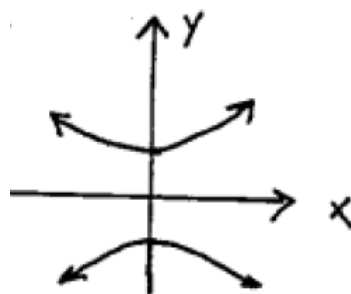
7.



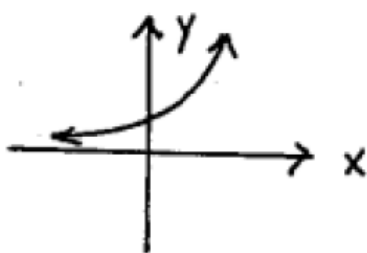
8.



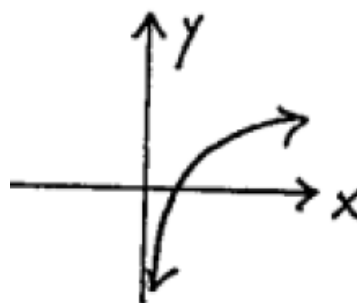
9.



10.

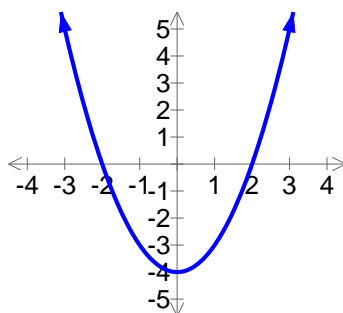


11.

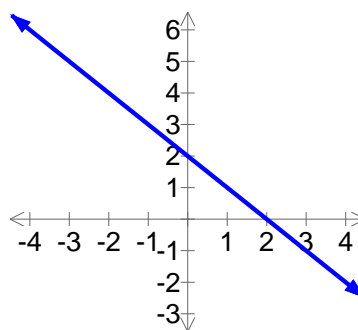


12.

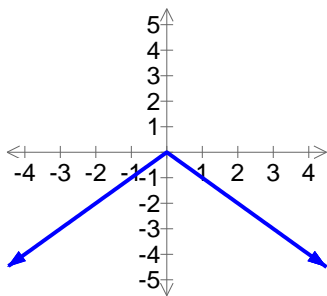
In problems 13 – 21 determine the domain and range of each of the functions whose graph is given. Express your answers using interval notation.



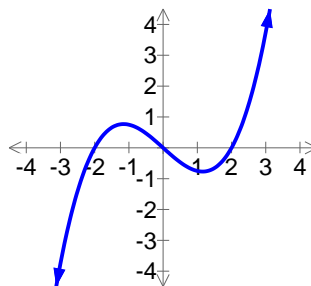
13.



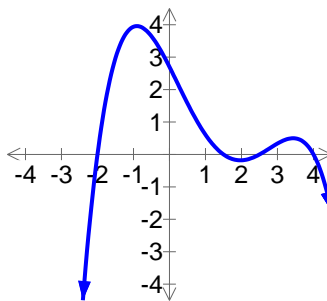
14.



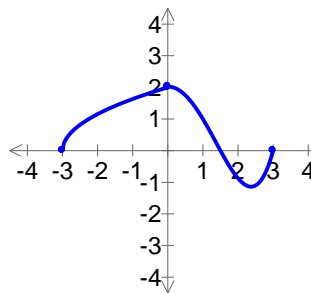
15.



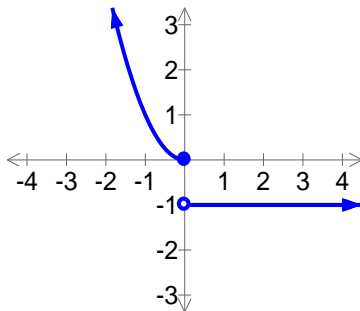
16.



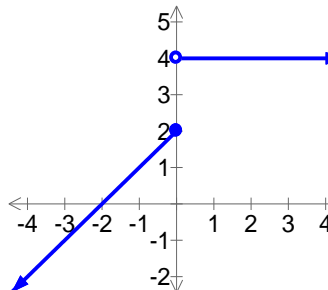
17.



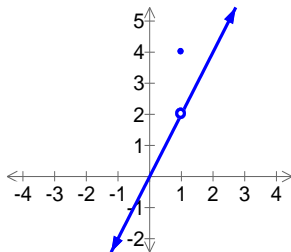
18.



19.



20.



21.