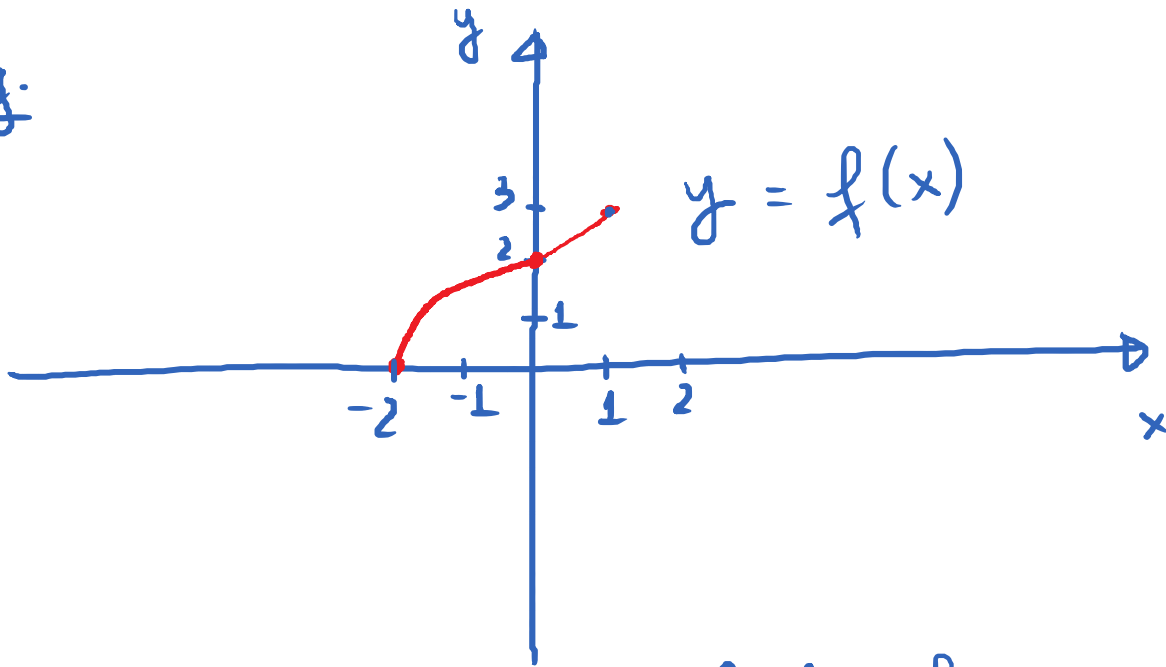


E.g.



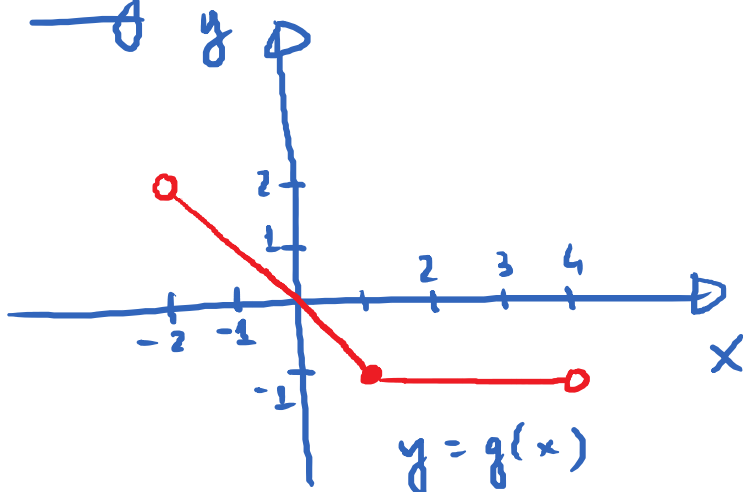
Q: Find the domain of this function.

$$[-2, 1]$$

Q: Find the range of this function.

$$[0, 3]$$

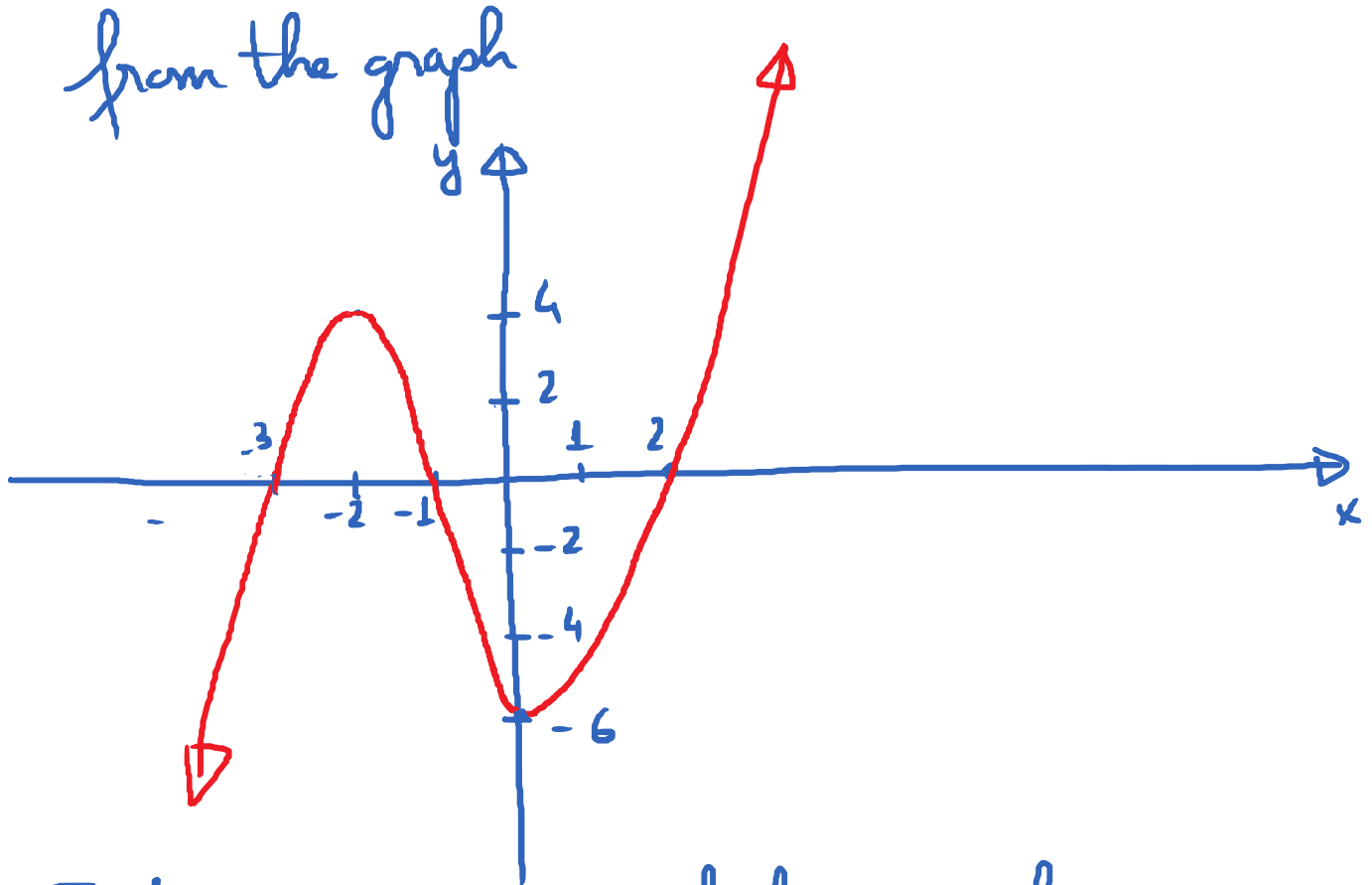
E.g.



Domain: $(-2, 4)$

Range: $[-1, 2)$

E.g. Identify the x -intercept(s) and y -intercept from the graph



Q: Find the x -intercept(s) of this graph.

The x -intercept(s) are the intersection(s) between the graph and the x -axis. In this case, they are the points: $(-3, 0)$; $(-1, 0)$; $(2, 0)$

Q: Find the y -intercept of this graph.

The y -intercept is the intersection between the

graph and the y -axis. It is the point $(0, -6)$