

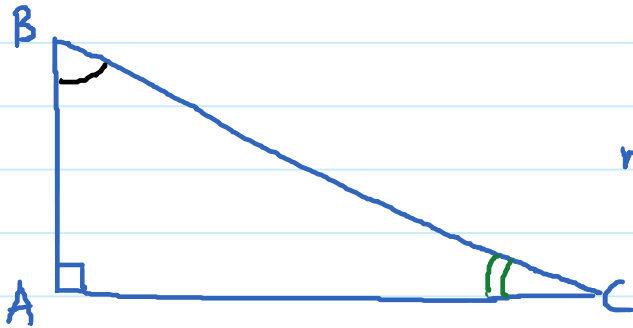
## 1.2. Similar Triangles

Monday, January 14, 2019

10:03 AM

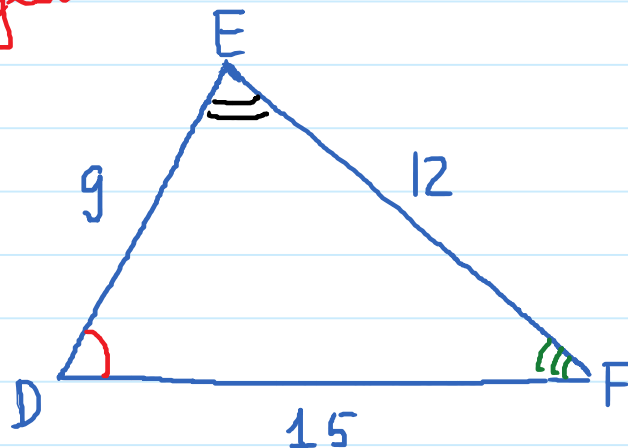
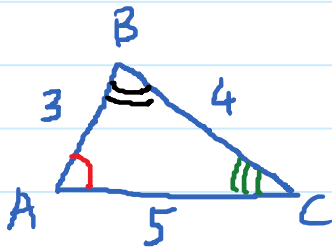


Sum of measures of 3 angles  
in any triangle is  $180^\circ$



$$m\angle B + m\angle C = 90^\circ$$

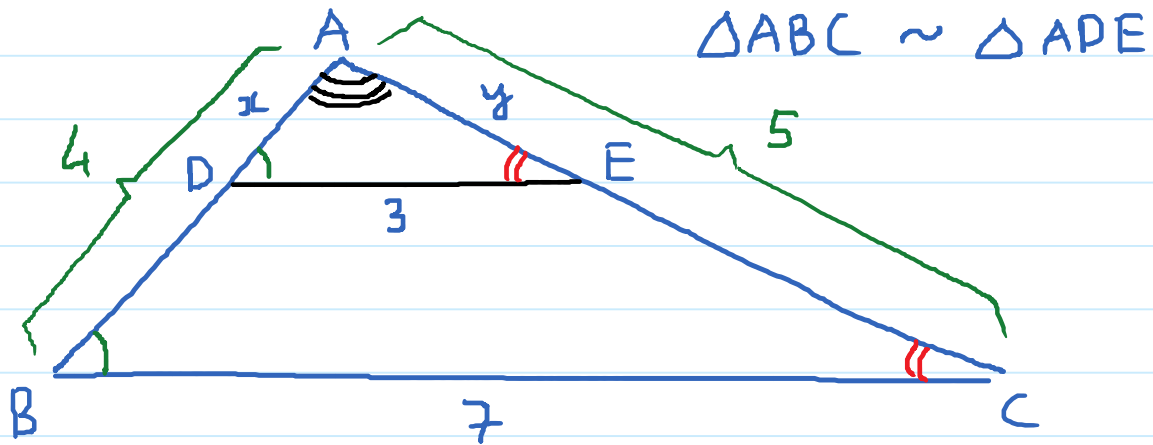
## Similar Triangles



Important Properties:  $\angle A = \angle D$ ;  $\angle B = \angle E$ ;  $\angle C = \angle F$

$$\frac{AB}{DE} = \frac{BC}{EF} = \frac{AC}{DF}$$

Wednesday, January 23, 2019 10:38 AM



$$\frac{AD}{AB} = \frac{AE}{AC} = \frac{DE}{BC} \rightarrow \frac{x}{4} = \frac{y}{5} = \frac{3}{7}$$
$$\frac{x}{4} = \frac{3}{7} \rightarrow x = \frac{12}{7} ; \quad \frac{y}{5} = \frac{3}{7} \rightarrow y = \frac{15}{7}$$

