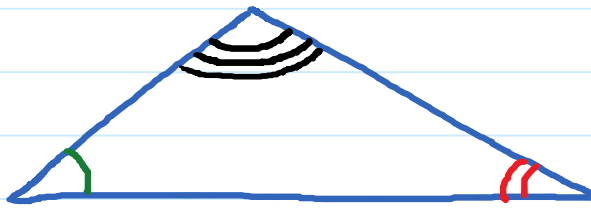


## 1.2. Similar Triangles

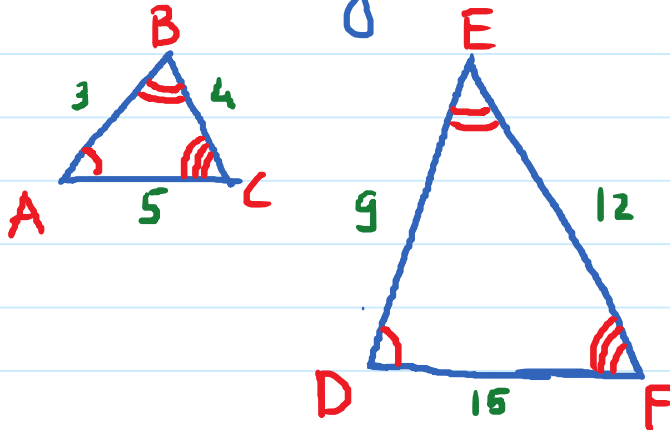
Thursday, January 17, 2019 9:15 AM

### Properties of Triangles.



Sum of the measures of  
3 angles in a triangle is  
 $180^\circ$

### Similar Triangles.

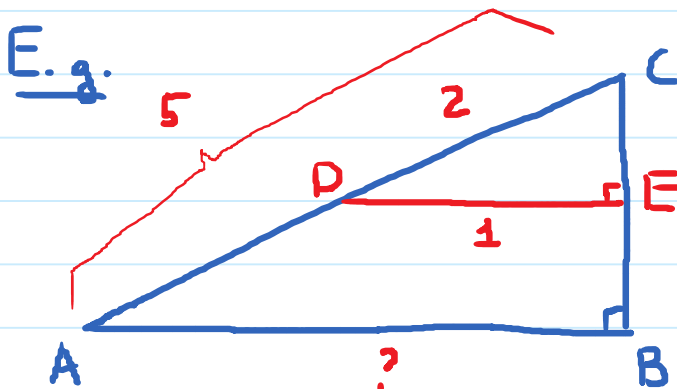


Facts about similar  
triangles

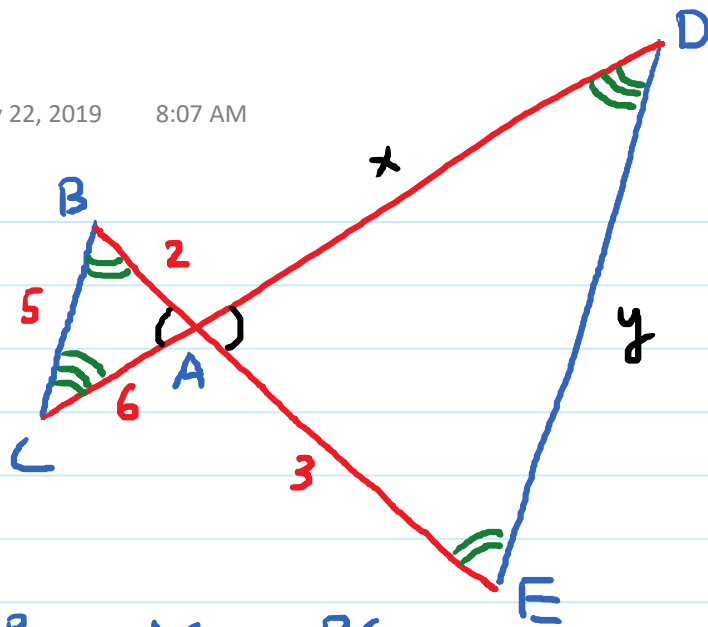
$$\begin{aligned}\angle A &\cong \angle D \\ \angle B &\cong \angle E \\ \angle C &\cong \angle F\end{aligned}$$

$$\frac{AB}{DE} = \frac{BC}{EF} = \frac{AC}{DF}$$

HW: Watch 1.3 video.  
Do HW 1.1 & 1.2



$$\begin{aligned}\frac{DC}{AC} &= \frac{DE}{AB} \\ \frac{2}{5} &= \frac{1}{AB} \\ AB &= \frac{5}{2}\end{aligned}$$



$$\frac{AB}{AE} = \frac{AC}{AD} = \frac{BC}{DE}$$
$$\frac{2}{3} = \frac{6}{x} = \frac{5}{y}$$

$$\frac{2}{3} = \frac{6}{x} \rightarrow 2x = 18 \rightarrow x = 9$$

$$\frac{2}{3} = \frac{5}{y} \rightarrow 2y = 15 \rightarrow y = \frac{15}{2}$$