

1.2 Similar triangles.

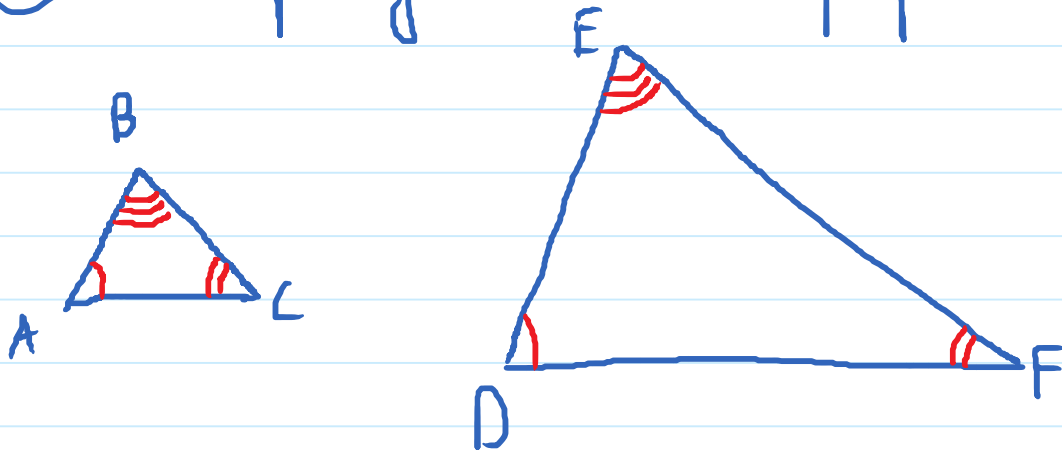
Wednesday, January 15, 2020

10:39 AM

- * Sum of 3 angles in a triangle = 180°
- * Similar triangles. are triangles of same shapes but necessarily the same size.

① Corresponding angles have same measures.

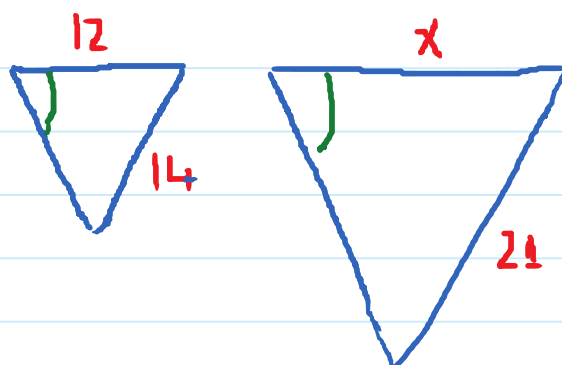
② Corresponding sides must be proportional.



ABC is similar to DEF.

$$\angle A = \angle D; \angle C = \angle F, \angle B = \angle E$$

$$\frac{AB}{DE} = \frac{BC}{EF} = \frac{AC}{DF}$$



Find x.

$$\frac{x}{12} = \frac{21}{14}$$

$$14x = 12 \cdot 21 \rightarrow 14x = 252 \rightarrow x = \frac{252}{14} = 18.$$